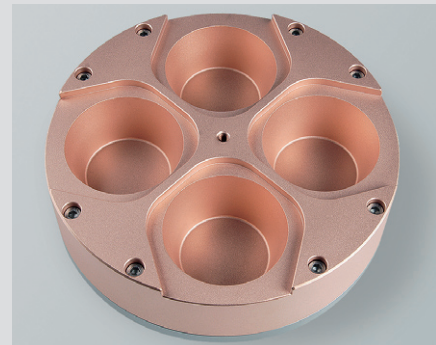
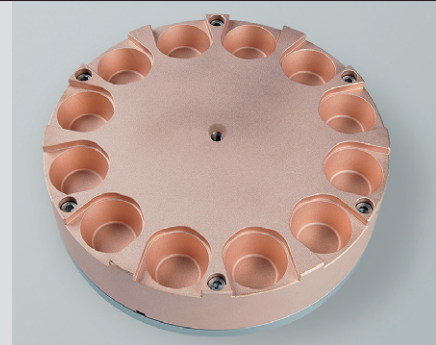
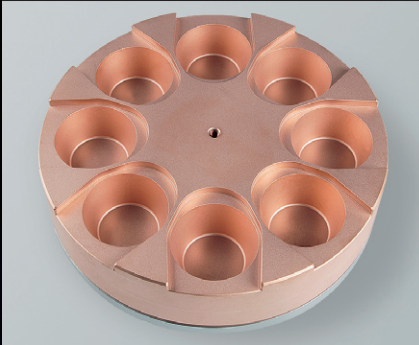


Crucibles for E-Beam Sources EV M-6, EV M-8 and EV M-10

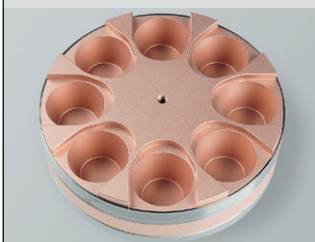
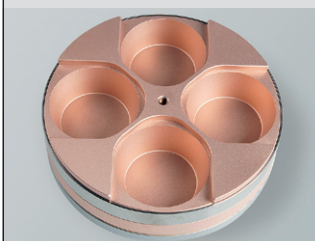
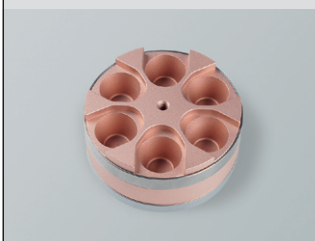


EV M-10			
pockets	volume	power	P/N
1	500 cm ³	8 kW	1-616635
1 ind	500 cm ³	4 kW	
1 hp	500 cm ³	10 kW	
4	60 cm ³	8 kW	1-616623
4 ind	60 cm ³	4 kW	
4 hp	60 cm ³	10 kW	1-616630
6	40 cm ³	8 kW	1-616625
6 ind	40 cm ³	4 kW	
6 hp	40 cm ³	10 kW	1-616631
8	20 cm ³	8 kW	1-616626
8 ind	20 cm ³	4 kW	1-616647
8 hp	20 cm ³	10 kW	1-616632
12	8 cm ³	8 kW	1-616636
12 ind	8 cm ³	4 kW	
12 hp	8 cm ³	10 kW	1-616645

ind: indirectly cooled hearth, hearth base required
hp: high power hearth, brazed version

Other hearth configurations for all E-Beam Sources are available on request

Crucibles for E-Beam Sources EV M-6, EV M-8 and EV M-10



EV M-6

pockets	volume	power	P/N
1	38 cm ³	5 kW	1-610901
1 ind	65 cm ³	3 kW	1-610913
1 hp	96 cm ³	6 kW	1-610954
4	8 cm ³	5 kW	1-610902
4 ind	8 cm ³	3 kW	1-610915
4 hp	8 cm ³	6 kW	1-610922
6	4 cm ³	5 kW	1-610903
6 ind	4 cm ³	3 kW	1-610907
6 hp	4 cm ³	6 kW	1-610923
8	2 cm ³	5 kW	1-610914
8 ind	2 cm ³	2 kW	
8 hp	2 cm ³	6 kW	

ind: indirectly cooled hearth, hearth base required
hp: high power hearth, brazed version

EV M-8

pockets	volume	power	P/N
1	190 cm ³	8 kW	1-611901
1 ind	190 cm ³	3 kW	1-611932
1 hp	190 cm ³	10 kW	1-611957
4	35 cm ³	8 kW	1-611902
4 ind	35 cm ³	3 kW	1-611931
4 hp	35 cm ³	10 kW	1-611922
6	20 cm ³	8 kW	1-611903
6 ind	20 cm ³	3 kW	1-611933
6 hp	20 cm ³	10 kW	1-611923
8	12 cm ³	8 kW	1-611914
8 ind	12 cm ³	3 kW	1-611929
8 hp	12 cm ³	10 kW	1-611921

ind: indirectly cooled hearth, hearth base required
hp: high power hearth, brazed version

Other hearth configurations for all E-Beam Sources are available on request

Ferrotec

USA

Ferrotec (USA) Corporation
33 Constitution Drive
Bedford, NH 03110, USA
Tel.: +1-603472-6800
Fax: +1-603472-2511
info@ferrotec.com
www.ferrotec.com

Germany

Ferrotec GmbH
Seerosenstraße 1
72669 Unterensingen
Tel.: +49-7022-9270-0
Fax: +49-7022-9270-1399
info@de.ferrotec.com
www.ferrotec.com

Japan

Ferrotec Corporation
1-4-14 Kyobashi
Chuo-ku, Tokyo 104-0031
Tel.: +81332818080
Fax: +81332818082
info@ferrotec.co.jp
www.ferrotec.co.jp

China

Hangzhou Dahe
Thermo-Magnetics Co., Ltd.
668 Bingkang Road
Bingjiang District, Hangzhou
Zhejiang Province, 310053
P.R. China
Tel.: +86 571-86696188
Fax: +86 571-86696199
ferrotec@ferrotec.com
www.ferrotec.com.cn